



6 Towse Court Icknield Place

Goring, RG8 0DN

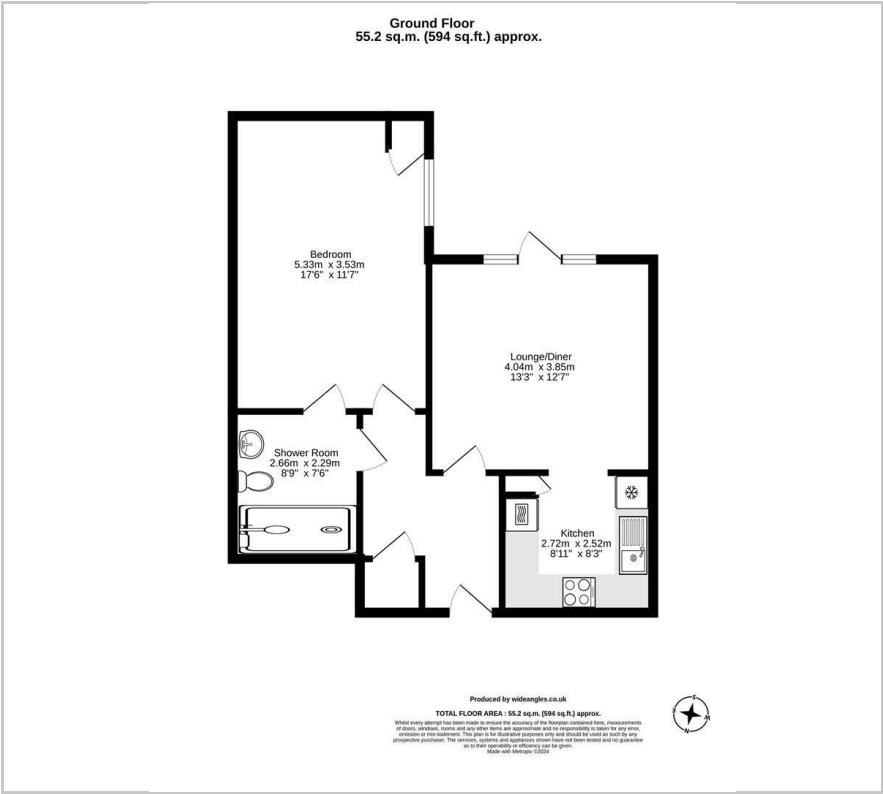
75% Shared Ownership £195,000

Well-presented, one-bedroom ground-floor apartment at Towse Court, an Extra Care Retirement Complex designed for residents aged 55 and over. This property offers the benefit of no rent to pay on the remaining 25% ownership. It features a spacious master bedroom, a modern shower room, and a generous lounge/diner combined with a kitchen area that opens via French doors to the communal gardens, creating a bright and inviting living space.

Towse Court is located in the picturesque South Oxfordshire village of Goring-on-Thames, nestled between the Chiltern Hills and the Berkshire Downlands—both designated Areas of Outstanding Natural Beauty. Goring-on-Thames boasts a vibrant community with a wide selection of shops, pubs, restaurants, and local amenities. The village is well-served by several doctor and dental surgeries, making it easy to meet most daily needs without leaving the area. Additionally, there is a mainline train station providing convenient services to London (Paddington), Didcot, and Oxford.

- Full Market Price £260,000
- Shares Available 75%
- Current Monthly Rent £0
- Current Monthly Service Charge £311.12
- Current Monthly Ground Rent £8.33
- Lease Term Remaining 114
- Beautifully Appointed 1 Bedroom Ground Floor Apartment
- Stylish wetroom with access via the bedroom and hallways
- Contemporary Kitchen with Built in Appliances

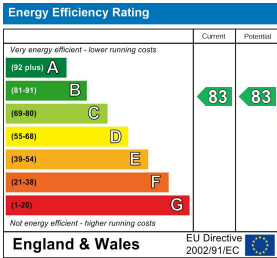
Floor Plan



Area Map



Energy Efficiency Graph



These particulars, whilst believed to be accurate are set out as a general outline only for guidance and do not constitute any part of an offer or contract. Intending purchasers should not rely on them as statements of representation of fact, but must satisfy themselves by inspection or otherwise as to their accuracy. No person in this firm's employment has the authority to make or give any representation or warranty in respect of the property.